



MONTHLY MEMBERSHIP PROGRESS REPORT

District 324B2

Results as of: 05/31/2019

GMT: N S SANKAR

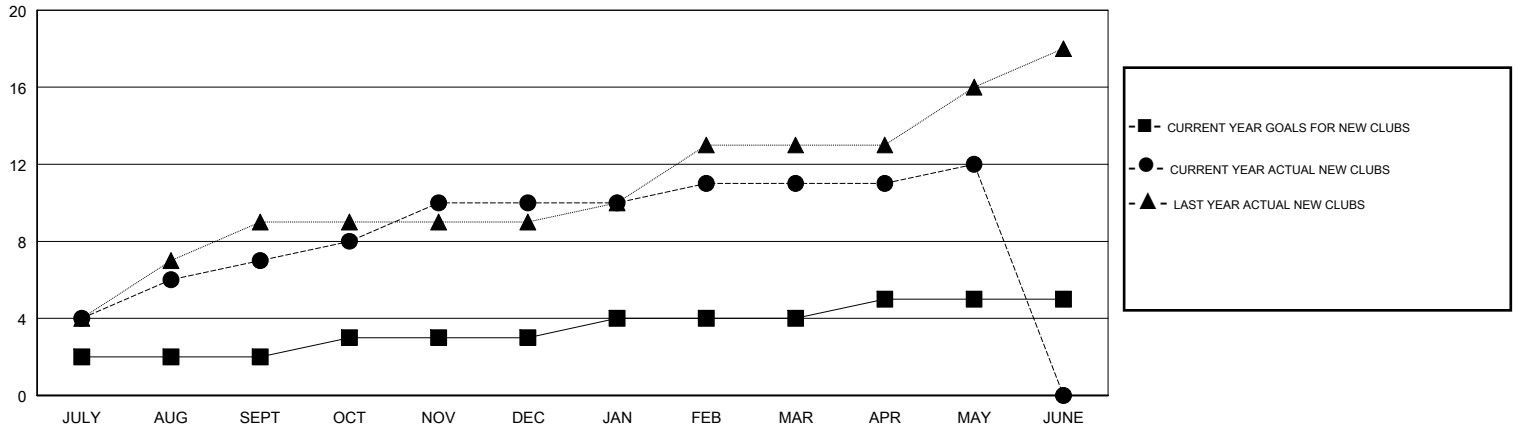
LOCATION INDIA

GMT CA

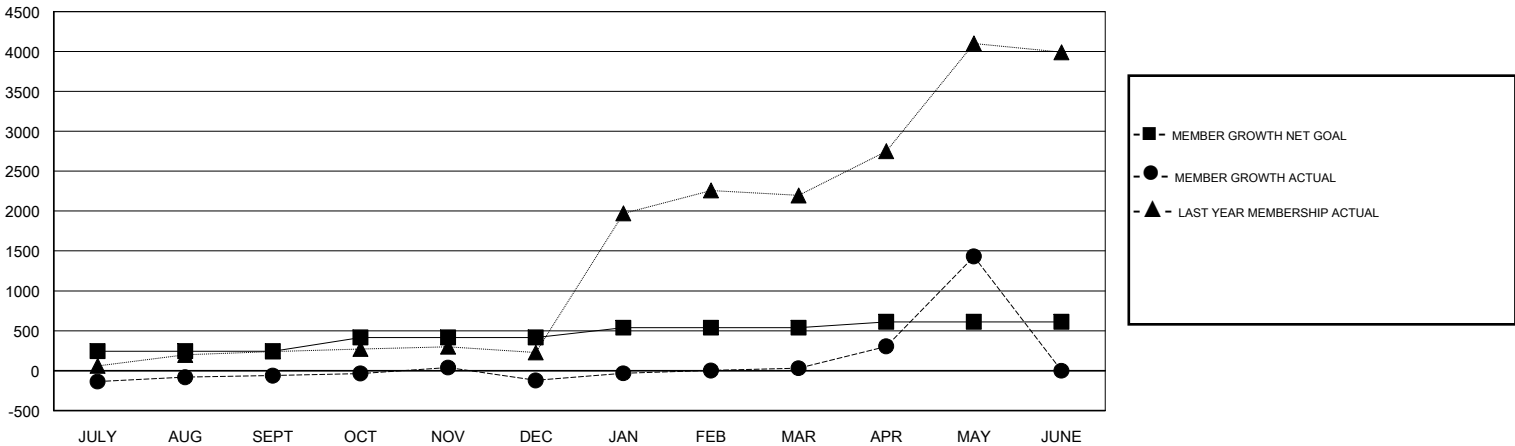
Clubs			
RESULTS FOR 2018-2019			
QUARTER	NEW CLUB GOAL	NEW CLUBS	DROPPED CLUBS
JULY/AUG/SEPT	2	7	0
OCT/NOV/DEC	1	3	3
JAN/FEB/MAR	1	1	1
APR/MAY/JUNE	1	1	1

Members			
RESULTS FOR 2018-2019			
QUARTER	MEMBER GROWTH NET GOAL	MEMBER GROWTH ACTUAL	DROPPED MEMBERS ACTUAL (including transfers)
JULY/AUG/SEPT	245	472	303
OCT/NOV/DEC	172	159	216
JAN/FEB/MAR	122	236	78
APR/MAY/JUNE	74	1,546	142

GOALS AND ACTUAL NEW CLUBS CUMULATIVE



GOALS AND ACTUAL MEMBERS CUMULATIVE



DROPPED CLUBS: 5	94 CLUBS OF 177 ADDED 1 OR MORE NEW MEMBERS	<u>GENDER DISTRIBUTION</u>	
DROPPED MEMBERS		MALE	9,982 (73.37%)
DECEASED	20	FEMALE	3,623 (26.63%)
CLUB CANCELLED	93	Women Percentage Fiscal Year Goal: 10%	
OTHER	626	TOTAL FAMILY UNIT MEMBERS	6,678
TOTAL	739	FAMILY MEMBERS PAYING HALF DUES	4,416

[CLICK HERE FOR CUMULATIVE MEMBERSHIP DATA](#)